



Vanessa Behan
crisis nursery



SAFE KIDS | STRONG FAMILIES | ENGAGED COMMUNITY

2018 GRATITUDE REPORT

A MESSAGE OF Thanks

This past year was another year of growth. Just when we think there is nothing more we can squeeze into our current space, staffing and budget, we manage to stretch just a little further to ensure our mission of preventing child abuse is met to the best of our ability. As you know, that has become increasingly difficult. Not only is our space an issue, child abuse in Spokane County is growing. Spokane outpaces the state of Washington and the United States in child abuse cases. With an average of nearly 18 founded cases of abuse every single day, the horizon can look a little bleak.

Over the past eight years, we have been monitoring our growth, demand, demographics of Spokane, and the rise of child abuse reports. Following, and throughout this report, are some of the things we have been doing to fulfill our promise to keep kids safe and strengthen parents.



In 2018, we served another record number of children. Over 6,000 times children found safety, love and hope while in our care. That is 6,000 opportunities to build resiliency in the children that visit. Yet we have remained true to our statistics of being forced to turn away 1 out of every 3 children whose parents called asking for help.

With the pending opening of our new location in 2019, we have designed a facility that will not only more than triple the amount of children we can care for, but also allow us to utilize our thirty-plus years of experience to increase outcomes. The facility was also designed to offer space to other experts in this field to provide programs that can benefit our families without duplicating existing programs.

You will see throughout this report that 2018 was a busy year from the standpoint of continuing the critical services we are known for, increasing where we can and designing and implementing plans for our soon to be forever home that will take our work to a new level (Read more about our new home on page 6). Thank you for joining us this year and we hope you continue to invest in our work so we can reach the 9 out of 10 children we know are out there but aren't benefiting from all we can offer.

2018 LEADERSHIP

BOARD OF TRUSTEES

Nancy Hindman | Chair
Heather Rosentrater | Chair Elect
Troy Braga | Treasurer
Marge Rusch | Secretary
Mike Ash
Bruce Baldwin
Dr. Becky Bull-Schaefer
Jody Gentemann
Tim Harper
Jeanette Hauck
Mo Lyden
Janet Mann
Jeani Natwick
Jennifer O'Callaghan
Amy Trosine
Cindy Wendle

LEADERSHIP TEAM

Amy Knapton Vega | Executive Director
Keith O'Brien | Development Director
Tami Starkey | Finance & Employee Engagement Director
Kristena O'Hara | Program Director
Reanna Thompson | Volunteer Director

Annual Report Editor | Ricci Brewer

MISSION

The Vanessa Behan Crisis Nursery provides safety for children, strengthens families and creates a healthier community in an environment of unconditional love.

THESE ARE THE FAMILIES YOU ARE *Impacting*

Every day parents contact Vanessa Behan because they are facing some circumstance that makes it difficult – if not impossible – for them to provide safe care for their children. In most cases, these parents do not have responsible friends or family to whom they can turn for help.

41%

of the families earned \$5,000 or less annually

8%

of families were homeless or in transitional housing (living in a shelter or motel, or temporarily staying with friends)

24%

of parents sought help for stress relief

66%

represent single parent households



NEARLY 100%

of the families we served live at or below the poverty level

49%

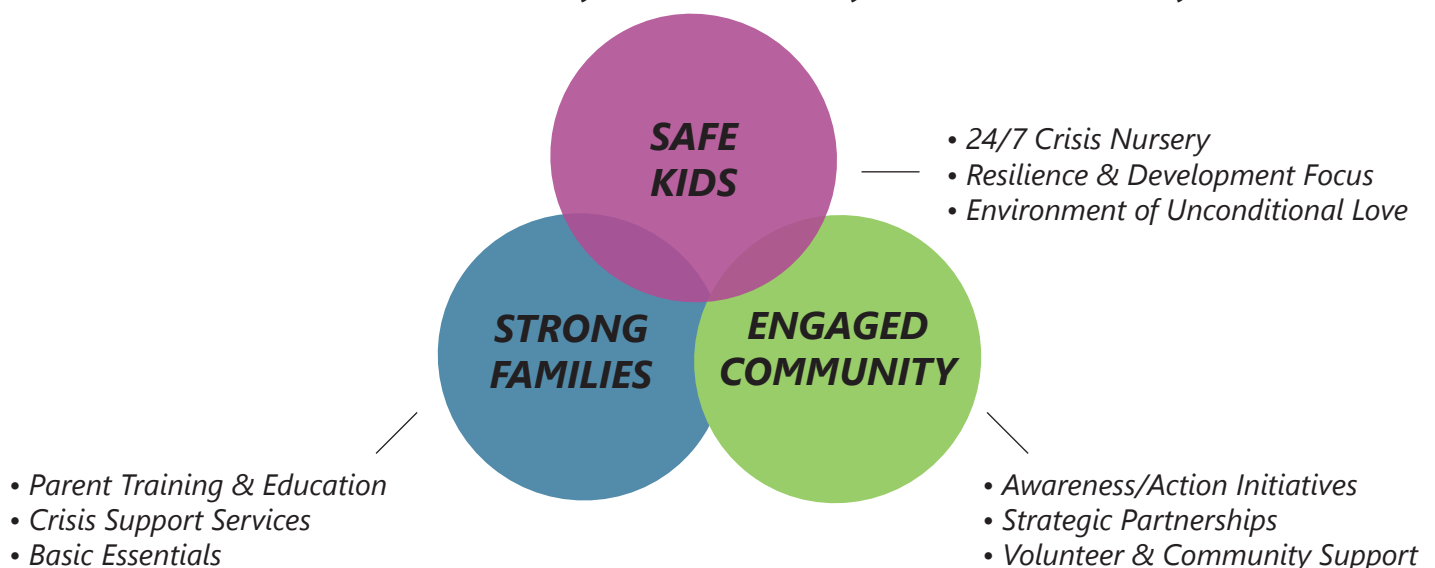
of families served were new to the Nursery

33%

of parents sought help for work-related issues

HOW OUR MODEL WORKS TO PREVENT ABUSE & NEGLECT

Founded and fueled by our community for our community



YOU HELP OUR CHILDREN & FAMILIES *Thrive*

Every day your support is changing lives and building futures through programs that keep kids safe, strengthen families and make our community healthier. This is your impact.

SAFE KIDS

*Provided **87,553** hours of safe care to **6,013** children*

Our dedicated staff and volunteers stretched themselves to the max to provide love and safety to protect the young visitors in our care. 48% of these little ones were under the age of 29 months - those most vulnerable to the devastating effects of child abuse and neglect.

STRONG FAMILIES

*Strengthened **869** Families*

These families were provided with 24-hour crisis counseling services, community and resource referrals through our HOPE program, and parent education with six eight-week parent education courses.

***66%** of Families reported a Reduction in Stress After Using Services*

This stress reduction is important because research suggests that parental stress is associated with the risk of abuse and neglect, therefore alleviating it can have a significant impact on keeping children safe.

*Distributed **271,155+** Basic Essentials*

Five days a week our business office distributed diapers, formula, wipes and other basic essentials to area families in need.

ENGAGED COMMUNITY

*Collaborated with over **50** Community Partners*

Our staff collaborated with more than 50 other community partners to make sure that our families had access to other resources within the community that will ensure our families grow stronger in their ability to care for their children.



You saved our family. You were there for us when no one else was, and still are. We love you all. Thank you for your endless love and support! - Vanessa Behan Family



Cam, Ashely, and their three children are just one of the 869 families that found help and support at Vanessa Behan this past year. When our staff met this family, they were staying at a local shelter. They had just moved from the Midwest at the promise of a job for Cam. When the family arrived in town, the job was no longer available. They lacked the funds to return to the Midwest and not knowing anybody in the area was terrifying. Luckily for the family, a social worker at the shelter referred them to Vanessa Behan.

During their first visit our staff connected Cam and Ashely with resources for housing, financial, vocational, food and early childhood education and assistance. We even provided the family with additional items to help them through the hard time; socks, underwear, coats, pants, sheets and blankets. Ashley cried during the visit, expressing gratitude that a place like Vanessa Behan existed to help them get back on their feet in a new place away from all family and support.

Over the next few months their three kiddos (ages five, four, and 16 months) enjoyed afternoons and a few overnights in our care meeting new friends and receiving love and attention from staff and volunteers. During this time, their parents were offered support and resources by our staff to stabilize their life and make Spokane home. Cam utilized this time to find work, Ashley enrolled in our parent education program, and together the couple was able to find permanent housing and childcare.

Cam, Ashley, and the children are doing great today. The family is currently living in a 4-bedroom home. Cam has maintained his job, and Ashely has aspirations of going back to college; she hopes to join the Police Department. The children are all in permanent childcare. They've added a family dog to their lives and have said that if it weren't for Vanessa Behan they truly believe the life they currently lead wouldn't be possible.

Here are the stories of just a few of the 6,013 children who received safe care at Vanessa Behan and enjoyed unconditional love of our House Parents and volunteers in 2018 thanks to your support.

🐾 **Keenan, 5:** Keenan spent the day playing with instruments, puzzles, and enjoying the fresh air outside while mom was donating plasma to earn the remaining portion of rent money.

🐾 **Teagan, 3:** Teagan spent the night reading stories and being rocked to sleep while his mom was fleeing a domestic violence situation.

🐾 **Linnea, 4 months; Troy, 2:** Troy and Linnea's dad had to attend his substance abuse group counseling appointment, so these little ones enjoyed a fun day at the Nursery. Linnea spent her day being rocked and held by House Parents and volunteers while her brother Troy played with building blocks and dinosaurs.

🐾 **Sierra, 6:** Sierra spent the day and night at the Nursery playing dress-up, playing house, and having her nails painted so mom could get some respite and alone time as she expressed being at her breaking point.

🐾 **Clara, 1, Meghan, 2; Simon, 4:** These siblings spent the afternoon and evening at the Nursery because their apartment caught fire, and their parents needed time to move things into storage. The kiddos enjoyed drawing pictures, playing house, playing with instruments, and reading stories while their parents took care of the family belongings.

OUR VOLUNTEERS ARE MAKING A *Difference*

Volunteers are the heart of the Vanessa Behan Crisis Nursery and every hour contributed helps keep kids safe and strengthen families in our community.



20,447 | *Total 2018 volunteer hours*

14,020 | *Dedicated hours working directly to support kids and families*

1,424 | *Total number of volunteers*

20:1 | *Ratio of volunteers to employees*

\$519,963 | *Equivalent dollar value of volunteer time donated*

"Volunteering in the Nursery has been an immense honor. I am acutely aware of the work that goes into making Vanessa Behan run, the entire staff, and the donors, the media outreach and all the various people and behind the scenes functions and energy that make the Nursery successful. The end goal, providing care and love to at-risk children, and here I am cradling one of those very children, rocking and soothing them to sleep, it is a profound feeling."

Tisha, Childcare Volunteer



PROJECT EVERY KID *Update*

Our community has grown and changed over the last 32 years and so has Vanessa Behan. As you read, child abuse and neglect is at an all-time high in our community and right now more families than ever before need our assistance.

We have outgrown the space in our current building, but more importantly, this lack of space limits our ability to offer critically needed services to help everyone who comes through our doors.

Project Every Kid is our answer. With a move-in date scheduled for December 2019 our new facility will allow Vanessa Behan to more than triple its impact in serving the children and families of the Spokane community.

Our new home offers three times more space and will allow us to provide support to 33% more families services.

This new location is conveniently located in Spokane's East Sprague District, close to I-90 and on bus routes, which gives our families better access to services.

The facility we are building is an efficient home for Vanessa Behan. Not only will the increase in space allow us to care for more children and families, but we will also have the ability to expand and implement new programs and services as listed to the right.

We believe we have found our forever home which will impact the families of our community for decades to come.



QUICK FACTS ABOUT OUR NEW HOME

ADDRESS: 2230 E. Sprague., Spokane WA 99202

ESTIMATED MOVE-IN: DEC. 2019

BUILDING FEATURES:

- 1.6 Acre Property
- 32,000 SF Facility
- 6,000 SF Outdoor Play Area
- Centralized & Accessible Location
- Increased & Safer Parking
- Space for Future Growth

PROGRAMS & SERVICES EXPANSION:

- Core Program Growth
- Staff & Volunteer Increase
- Crisis Support Service
- Stay, Play & Learn Center
- Temporary Foster Placement
- Serve Siblings up to 10 years old
- Community Agency Partnerships
- Parent Resource & Learning Center

Save the Date

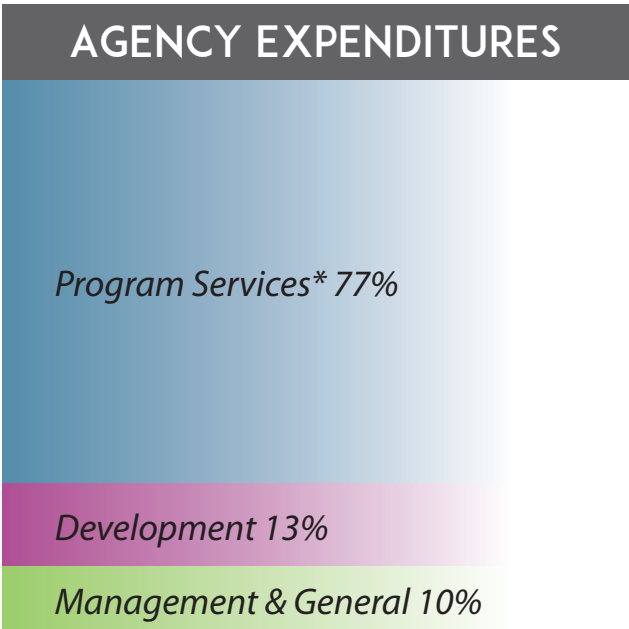
DEC. 3RD-5TH, 2019
NEW HOME
GRAND OPENING
CELEBRATIONS

As we remain privately funded, we invite the community to share in the continued ownership of the Nursery. Together we can create not only an expanded facility but a deep impact for children and families. For those interested in learning how you can support our future, please contact our Development Director, Keith O'Brien, at 509.340.0482.



2018 FINANCIAL REPORT

Contributions (Individual & Business)	\$979,281
Contributions (Project Every Kid)	\$3,559,357
Events & Programs, net of direct costs	\$536,966
Direct Public Appeals	\$229,161
Grants	\$169,531
In-Kind Contributions	\$179,149
Interest & Miscellaneous Income	\$13,931
TOTAL INCOME:	\$5,667,367
Program Services	\$1,760,680
Development	\$286,610
Management & General	\$233,535
TOTAL FUNCTIONAL EXPENSES:	\$2,280,825
CHANGE IN NET ASSETS**:	\$3,386,551



*The BBB Wise Giving Alliance standards regarding charity finances suggest charities not spend less than 65% on program services and more than 35% on development.

** Change in Net Assets are designated funds for Project Every Kid.



UPCOMING VANESSA BEHAN EVENTS

• 2019 •

- Sept. 17-19: *I Give For Kids* Phonathon
- Oct. 5: *I Give For Kids* KHQ Telethon
- Oct. 26: The Pumpkin Ball
- Nov. 15: Exchange Club Crab Feed
- Nov. 23-Dec. 23: Santa Express
- Dec. 3-5: New Home Grand Opening Celebrations

• 2020 •

- Jan. 21: Annual Awards & Recognition Celebration
- Mar. 27: Triple Play Night for Diaper Drive
- Apr. 24: Cheers For Kids
- May TBD: Krem Diaper Drive
- Jun. 3: Vanessa’s Promise Benefit Luncheon
- Jul. 14-19: Rosauers Open