



Vanessa Behan
crisis nursery

Celebrating 30 Years



SAFE KIDS | STRONG FAMILIES | ENGAGED COMMUNITY

2017 GRATITUDE REPORT

A MESSAGE OF Thanks

The Vision at Vanessa Behan has always been to prevent child abuse and neglect in our community. As you will see in this report, there are many ways in which we have had a profound impact on children and their parents this past year. It is our hope that you see your investment into our work on every inch of this report. This work is a collective effort that wouldn't be possible without people just like you joining all of our staff and volunteers to truly change outcomes for those we are blessed to serve.

As we look out on the horizon, we still have so much more to accomplish. This is the year our dreams of serving more children finally came together. For years now we have kept a pulse on the rising rates of child abuse and neglect. With approximately 15 founded cases each day, Spokane has the highest rate of reported child abuse and neglect in our state. This is compounded with our growing turn away numbers and our assessment that we are likely only serving about 10% of children that could benefit from our programs. 2017 marks the year for future growth.

In October we purchased outright a 1.67 acre parcel of land where we will soon be able to triple our impact. By 2020, you will see a new location that will allow us to serve up to 60 children at a time. If that isn't exciting enough, we are taking our 30 years of experience and designing new programs and partnerships that will allow us to take our impact to a whole new level!

We invite you to join us once again as the Nursery remains committed to operating 100% privately funded and to complete this growth project with little to no debt. It is a big challenge, but yet one we cannot ignore for the simple fact that Spokane, our children, and their parents need us.

Thank you all for making 2017 a pivotal year for us. From those of you that are fairly new to our work, to those that have been alongside us for the past 30 years, we ask you to not only stay by us through this major growth, but to stay committed to our children forever. I can think of no better investment!



2017 LEADERSHIP

BOARD OF TRUSTEES

Nancy Hindman | Chair
Heather Rosentrater | Chair Elect
Troy Braga | Treasurer
Marge Rusch | Secretary
Mike Ash
Bruce Baldwin
Dr. Becky Bull Schaefer
Chris Foster
Jody Gentemann
Jeanette Hauck
Mo Lyden
Jeani Natwick
Jennifer O'Callaghan
Cindy Wendle

LEADERSHIP TEAM

Amy Knapton Vega | Executive Director
Keith O'Brien | Development Director
Tami Starkey | Finance Director
Kristena O'Hara | Program Director
Reanna Thompson | Volunteer Director

Annual Report Editor | Ricci Brewer

Mission: The Vanessa Behan Crisis Nursery provides safety for children, strengthens families and creates a healthier community in an environment of unconditional love.

OUR History

"I belong to Vanessa Behan. I'd rather stay there than anywhere. They're probably the nicest people I ever had."
- Angel, Age 6



In 1982 Nursery Founder Bill Bialkowski watched the story of 2-year-old Vanessa Kay Behan's tragic death unfold in our community. He dreamed of a prevention focused program that would intervene before the damaging effects of abuse and neglect took their toll on another child. Finding Spokane had nothing, he began his journey to create, open and privately fund such an agency. After five years of fundraising the Nursery opened its doors in 1987 and has provided care and services for nearly 97,000 children and support for their families over the past 30 years.



1987

VBCN Opens Doors

1982

Vanessa Behan's Death

1997

Program Development Helping More Children & Families

2000

Existing Facility Completed



2007

50,000 Children & Families Helped

2010

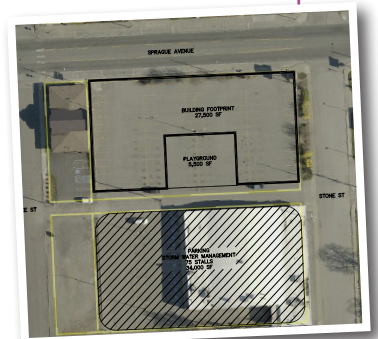
Vision for Deeper Impact Begins

2017

Property Purchased

2020

Move Into New Facility



"It's very hard for me sometimes to be a good mom. The Nursery helps me by giving me time I need to deal with stress."
- Nursery Mom



YOU HELP OUR CHILDREN & FAMILIES

Thrive

Every day your support is changing lives and building futures through programs that keep kids safe, strengthen families and make our community healthier. This is your impact.

SAFE KIDS

*Provided **92,664** hours of safe care to **5,619** children*

Our dedicated staff and volunteers stretched themselves to the max to provide love and safety to protect the young visitors in our care. 48% of these little ones were under the age of 29 months - those most vulnerable to the devastating effects of child abuse and neglect.

STRONG FAMILIES

*Strengthened **635** Families*

These families were provided with 24-hour crisis counseling services, community and resource referrals through our HOPE program, and parent education with six eight-week parent education courses.

*Our Families had a **16%** Reduction in Stress*

This stress reduction is important because research suggests that parental stress is associated with the risk of abuse and neglect, therefore alleviating it can have a significant impact on keeping children safe.

*Distributed **243,240+** Basic Essentials*

Five days a week our business office distributed diapers, formula, wipes and other basic essentials to area families in need.

ENGAGED COMMUNITY

*Collaborated with over **50** Community Partners*

Our staff collaborated with more than 50 other community partners to make sure that our families had access to other resources within the community that will ensure our families grow stronger in their ability to care for their children.



YOU CREATE NEW Programs FOR CHILDREN AND FAMILIES

Thanks to funding from supporters like you in 2017, VBCN piloted a new RAC program for children who have just been removed from their parents or guardians and need safe care until a more permanent foster or group home is identified.



Five-year-old Mya and her three-year-old brother Mark spent months merely surviving in unsafe living conditions until one day their world was flipped upside-down. Unable to share the specific details of the traumatic events that brought these little ones to the Nursery, we can share these two kiddos arrived at our door accompanied by a law enforcement officer late one evening after being removed from their home.

Prior to January 2017, Mya and Mark would not have been able to come to the Nursery, however after diligent persistence on the Nursery's end we obtained an additional license through the state of Washington to become a Resource and Assessment Center (RAC). With this license, children like these siblings, who have just been removed from their parents or guardians, can be placed at the Nursery for 72 hours or more for safe care until a more permanent foster or group home is identified.

Our staff welcomed Mya and Mark into the building, taking them back to the quiet room to get acquainted, changed into pajamas and settled in for the night. While it was late, the siblings seemed exhausted, yet wound-up. Sara, a House Parent, grabbed a stack of books and began reading stories to the kiddos until Mark was fast asleep in her arms. With lots of yawning, Mya helped get her brother tucked in and was ready to climb in bed with her brother when Sara showed her the free bed for Mya next to his. "I get my very own bed?!" Mya exclaimed. She shared that she always slept in a bed with her brother, and that it folds out by their TV. Soon Mya was safely asleep in the little bed next to her brother's.

The next few days were a whirl wind of yummy meals, playing dress-up, crafts, running hallway races, stories and lots of time with new friends. To our staff, it seemed that Mya and Mark were relieved to be in such a happy, caring environment. The children smiled and played, like all children should, enjoying their time at the Nursery getting to focus on just being kids.

Mya and Mark ended up staying in our care past the normal 72 hours until a foster family was identified. When their visit came to an end, staff put together backpacks filled with blankets, toothbrushes, books, toys, matching pajamas, and the art work they had created while in our care. When Mark and Mya's foster parents arrived staff met with them, sharing details we had learned about the kiddos to help make their transition to the foster family more successful. In addition, the foster parents were able to spend time playing in the playroom with Mya and Mark before leaving. This is one of the many unique benefits to this program, giving our children the opportunity to get acquainted with their foster families in an environment they feel safe and comfortable.

While our staff were sad to see Mark and Mya go, we were also grateful to create this new program ensuring that during this difficult transition, the 52 children brought to our doors during 2017 as part of the RAC Program, were safely cared for and setup for success and better outcomes in their future placements.

THESE ARE THE FAMILIES YOU ARE *Impacting*

Every day parents contact the Crisis Nursery because they are facing some circumstance that makes it difficult – if not impossible – for them to provide safe care for their children.
In most cases these parents do not have responsible friends or family to whom they can turn for help.

53% of the families earned \$5,000 or less annually

10% of families were homeless or in transitional housing (living in a shelter or motel, or temporarily staying with friends)

23% of parents sought help for stress relief

68% represent single parent households



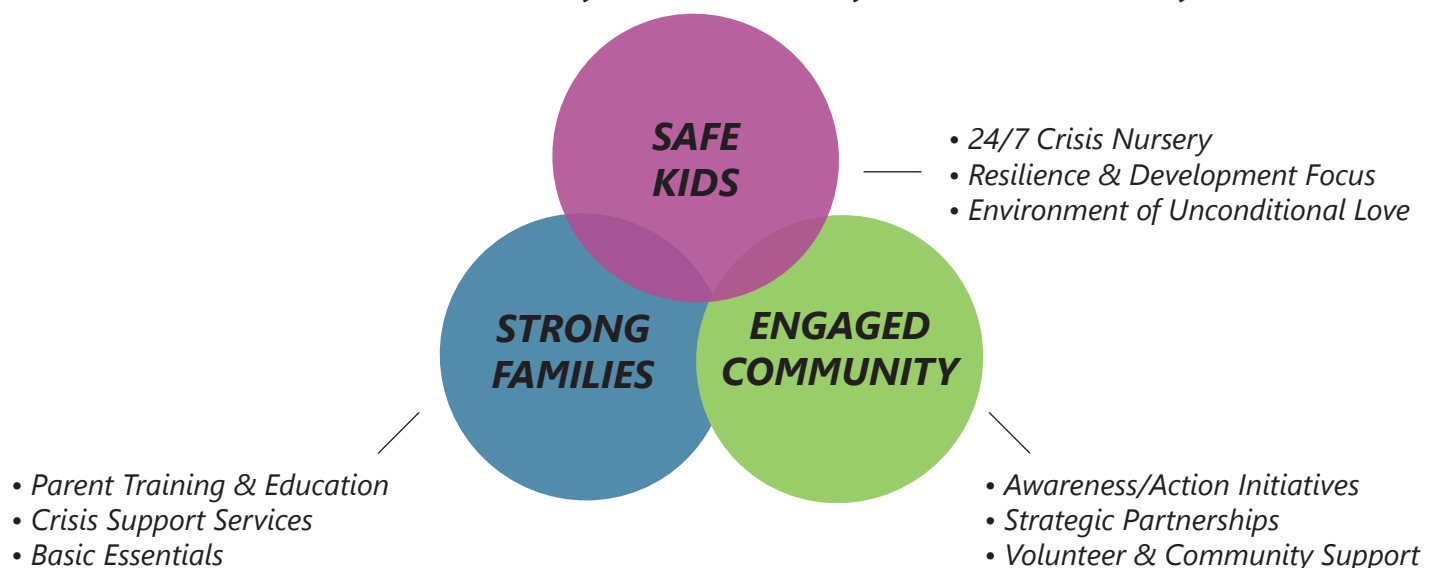
NEARLY 100% of the families we served live at or below the poverty level

59% of families served were new to the Nursery

26% of parents sought help for work-related issues

HOW OUR MODEL WORKS TO PREVENT ABUSE & NEGLECT

Founded and fueled by our community for our community



OUR VOLUNTEERS ARE MAKING A *Difference*



Volunteers are the heart of the Vanessa Behan Crisis Nursery and every hour contributed helps keep kids safe and strengthen families in our community.

18,793 | *Total 2017 volunteer hours*

12,274 | *Dedicated hours working directly to support kids and families*

1,470 | *Total number of volunteers*

21:1 | *Ratio of volunteers to employees*

\$564,541 | *Equivalent dollar value of volunteer time donated*

"There was a little boy who just stole my heart. We had lunch and he tried a bite of everything, even all the veggies. I was so proud of him. I rocked him for nap time, but I had to go after that. When I tucked him in to his little bed he said, 'I want you (to stay),' and I said, 'I want that too.' We both told each other we'd come back and we hugged. When I walked out of the room he waved at me from his bed, he's the sweetest boy."

Megan, Childcare Volunteer



PROJECT EVERY KID

A grand vision to protect thousands more children and families from the trauma of abuse and neglect.

PRIORITIES

- Impact Three Times as Many Children and Families
- Expand Program Services to Increase Quality of Prevention-Focused Work
- Space and Physical Capacity to Serve More Families Through a New Crisis Nursery and Family Center

YOUR SUPPORT IS CRUCIAL

To learn more about Project Every Kid, and ways you can help, call 509.340.0486 to schedule a visit or go to www.vanessabehan.org/projecteverykid.

2017 FINANCIAL REPORT

Contributions (Individual & Business)	\$1,340,688
Events & Programs, net of direct costs	\$536,662
Direct Public Appeals	\$264,075
Grants	\$187,251
In-Kind Contributions	\$155,659
Interest & Miscellaneous Income	\$12,883

TOTAL INCOME: **\$2,497,218**

Program Services	\$1,522,384
Development	\$283,818
Management & General	\$213,376

TOTAL FUNCTIONAL EXPENSES: **\$2,019,578**

CHANGE IN NET ASSETS:** **\$477,640**

AGENCY EXPENDITURES

Program Services 75%*

Development 14%

Management & General 11%

*The BBB Wise Giving Alliance standards regarding charity finances suggest charities not spend less than 65% on program services and more than 35% on development.

** Excess revenues at the end of each year are saved for future growth and the Nursery's endowment.